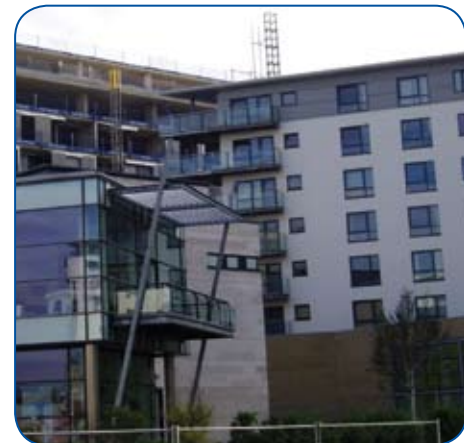


# BSc (Hons) Building Engineering

# BSc (Hons) Building Control Engineering



## Costs

**Full Programme** (with accommodation)  
£4,475 + VAT

**Full Programme** (without accommodation)  
£4,000 + VAT

## The Courses

The Association of Building Engineers, in partnership with Sheffield Hallam University, is pleased to offer the popular BSc (Hons) Building Engineering Degree and the BSc (Hons) Building Control Engineering Degree. The programmes provide opportunities for ABE members to gain full membership through a high quality learning experience.

Each degree programme has been developed in conjunction with Sheffield Hallam University, and is designed to meet the Quality Assurance Agency's subject benchmark for graduates in Building and Surveying. These programmes give members of the ABE the opportunity to gain knowledge on the learning outcomes for building engineers as defined by the Construction Industry Board (CIB) Educational Framework. The awards are validated by Sheffield Hallam University.

Both degree programmes enable Associate and Corporate Members of the ABE to:

- achieve an honours level degree
- develop academic and lifelong learning skills
- increase subject specific knowledge and skills in professional practice
- allow Associates to progress to corporate ABE membership
- develop and maintain required levels of CPD.

The courses increase your understanding of research methods and use a mixture of: tutorials, workshops, seminars, group work and directed independent study. This improves your skills in the building engineering/building control areas.

The programmes focus on career progression and employability and qualifications like these can open up career opportunities at senior technical and management levels, especially in local planning authorities and other building control surveying/consultancy organisations.

## Attendance

Each programme is made up of three semesters. The delivery of lectures, tutorials and seminars is offered on a part-time basis, with each taught session taking place over two or three days.

## Assessment

You must demonstrate that you can apply knowledge, understanding and skills in a range of coursework assessment methods including:

- professional reports
- verbal presentations
- closed examinations.



## BSc (Hons) Building Engineering

This programme consists of eight modules.

### Research methods

You create and develop research aims, objectives and hypotheses. This module makes you aware of the essential requirements of methods for research projects.

### Reflection on professional experience

Independent judgement and self-awareness skills allow you to reflect on and evaluate your own professional experience. You develop alternative learning strategies and improve your communication skills.

### Management of health and safety at work

This module reviews key aspects of built environment related health and safety legislation. You develop your knowledge and practice of health and safety management.

### Advanced building control

You develop your understanding of the issues involved in operating the building control function. You examine the professional role of the building control surveyor in local authority and private sector environments.

### Principles and practice of management

You identify and evaluate management theory and practice. You consider management theory, quality models, cultural theory, team working and performance measurement.

### Project and site management

You explore the contribution of the planning process within integrated project management systems. This includes using planning software to prepare and analyse a network programme for a more complex construction project and developing method statements for different stages of the construction process.

### Fire studies

We develop your knowledge of the combustion process by explaining the physics and chemistry of fire. The module analyses the physiological and psychological effects of fire and the practical issues about implementing fire safety in buildings.

### Sustainable construction

You identify and explain the principles of environmental management as applied in the built environment.



## BSc (Hons) Building Control Engineering

This programme consists of eight modules.

### Research methods

You create and develop research aims, objectives and hypotheses. This module makes you aware of the essential requirements of methods for research projects.

### Reflection on professional experience

Independent judgement and self-awareness skills allow you to reflect on and evaluate your own professional experience. You develop alternative learning strategies and improve your communication skills.

### Management of health and safety at work

This module reviews key aspects of built environment related health and safety legislation. You develop your knowledge and practice of health and safety management.

### Advanced building control

You develop your understanding of the issues involved in operating the building control function. You examine the professional role of the building control surveyor in local authority and private sector environments.

### Fire studies

We develop your knowledge of the combustion process by explaining the physics and chemistry of fire. The module analyses the physiological and psychological effects of fire and the practical issues about implementing fire safety in buildings.

### Geotechnics

This module develops your understanding of soil mechanics and applies your knowledge to a range of geotechnical problems. You investigate various types of foundations and their use, applying your knowledge to the solution of practical problems.

### Structural engineering design

Using your understanding of design processes, you show how they can be applied to the solution of practical problems in an appropriate way. You interpret the general behaviour of construction materials in relation to their design, and study the processes of structural design in accordance with current codes of practice.

### Sustainable construction

You identify and explain the principles of environmental management as applied in the built environment.

## Entry Requirements

The minimum entry criteria is 240 academic credits (or CATS points). Candidates with an HND or Foundation Degree can obtain direct entry to either of the Degree programmes as they will normally have reached the minimum level of 240 academic credits.

A candidate with an HNC qualification will have points varying between 120 credits and the 240 credit level threshold depending upon the number of modules/units completed with the original educational establishment.

For all qualifications that fall short of 240 points, entry to the top-up award will be through the University's Accreditation of Prior Experiential Learning (APEL) route. This simply means that the candidate will be required to provide a written report prior to starting the actual BSc (Hons) programme. This report in essence makes up the shortfall in credit points and forms part of the top-up degree.

Each candidate will be reviewed on an individual basis by Sheffield Hallam University to confirm the number of credits previously obtained.

There is a fee for the submission and assessment of the report and this will vary depending upon the number of credit points an HNC candidate already has. The cost to the HNC candidate will be £100 per 10 credit shortfall. Evidence of existing credit points must be provided at the start of Semester One.

(Example, an HNC candidate wishing to enrol on the top-up degree programme with 150 credit points will have a 90 credit shortfall. The fee will be: 90 credits divided by 10 x £100. Example  $90/10 \times £100 = £900$ )

## English Language

If English is not your first language you must demonstrate appropriate levels of English language competence including:

- British Council International English Testing Services (IELTS) overall band 6.5
- Cambridge Certificate in Advanced English (CAE) Pass
- Assessment and qualifications Alliance (AQA)/Northern Examinations and Assessment Board (NEAB) University Entrance test in English for Speakers of Other Languages (UETESOL) Pass
- Test of English as a Foreign Language (TOEFL) score 550 (paper based) or 213+ (computer based).

# BSc (Hons) Building Engineering

## BSc (Hons) Building Control Engineering



### Semester One

09-11 September 2010 – Sheffield  
10-11 December 2010 – Northampton

### Semester Two

13-15 January 2011 – Sheffield  
20-21 May 2011 – Northampton

### Semester Three

08-10 September 2011 – Sheffield  
09-10 December 2011 – Northampton

### COURSE

Both programmes have been designed so that candidates can start the programme in any semester and complete the course in approximately an 18-month period. Thus a candidate starting in September 2010 would complete the third semester by February 2012. To commence the enrolment process, please complete the details below and return to ABE along with an up-to-date CV. Your application will then be assessed and you will be forwarded the relevant application forms.

**BSc (Hons) Building Engineering** [ ]

**BSc (Hons) Building Control Engineering** [ ]

Applicant Name: \_\_\_\_\_

Organisation: \_\_\_\_\_

Address: \_\_\_\_\_

\_\_\_\_\_ Postcode: \_\_\_\_\_

Tel: \_\_\_\_\_ Fax: \_\_\_\_\_

E-mail: \_\_\_\_\_

ABE Member: Yes/No Member No: \_\_\_\_\_

HNC: Yes/No HND: Yes/No Foundation Degree: Yes/No

### FEES

Full Degree programme including registration and nine nights' accommodation: £4,475 + VAT [ ]

Full Degree programme including registration with no accommodation: £4,000 + VAT [ ]

Training Affiliate Discount 5% [ ]



## TERMS & CONDITIONS

The Association has to make provision for the running of courses including seminars, conference, NVQ, SVQ and VRQ and degree qualification whether the candidate completes them or not. As such the candidate will be required to cover the cost of each Semester prior to commencement of the programme. Upon offer of a place on the degree programme from Sheffield Hallam University the candidate will be liable for the advertised course fees. Cancellations must be received in writing by the Deputy Chief Executive and will be reviewed on an individual basis.

Association of Building Engineers, Registered Office: Lutyens House, Billing Brook Road, Northampton NN3 8NW.  
The Association of Building Engineers is a company limited by guarantee, registered in London. No. 384 609